

# CAMILLA

R&D POLIFORM (2006)



## DESCRIPTION

A new interpretation of the deep seating armchair, between formal references and essential design. Very thick cushions underline the idea of top comfort and of cosiness.

**Poliform**

# CAMILLA

R&D POLIFORM (2006)



## TECHNICAL DESCRIPTION

### TPOLOGY

armchair

### STRUCTURE

solid wood

### SEAT PADDING

multi-density polyurethane foam and feathers

### PRE-COVER

cotton cloth

### COVER STRETCHED FINAL COVER

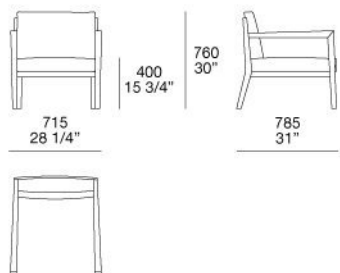
removable fabric leather

**Poliform**

# CAMILLA

R&D POLIFORM (2006)

**S15**



# CAMILLA

FINISHINGS\STRUCTURE\WOODS (2)

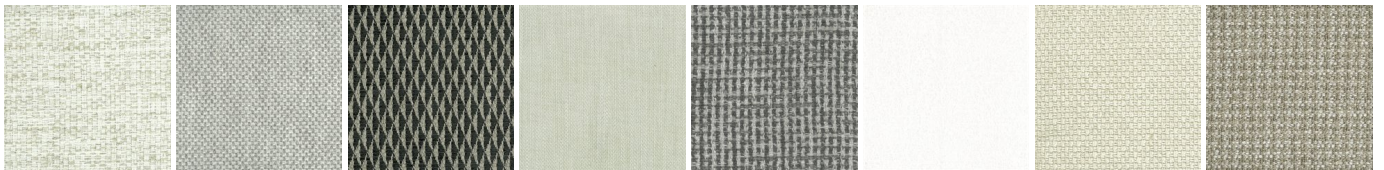


WALNUT-C

SPESSART  
OAK

# CAMILLA

FINISHINGS\SEAT\FABRIC (35)



CHIOS

ARGO

CORINTO

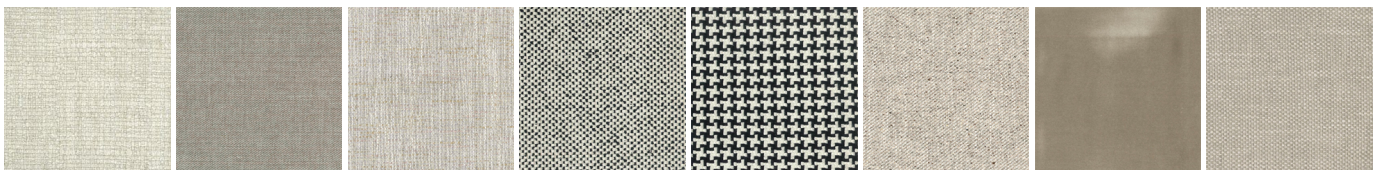
ITACA

MILOS

OLIMPIA

PAROS

ZANTE



SPARTA

SALFORD

ORLEANS

DERBY

LIMOGES

OXFORD

PERSIA

RABAT



MERIDA

HANNOVER

CORDOBA

CALEDONIA

NORWAY

ASPEN

ATLANTA

BERLINO



KYOTO

LIMA

MELBOURNE

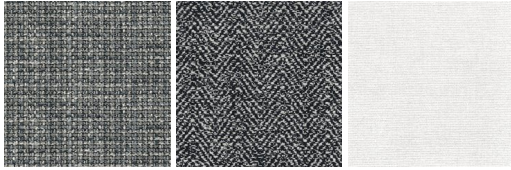
PORTO

REIMS

SAVANA

SIVIGLIA

INDRA - NEW



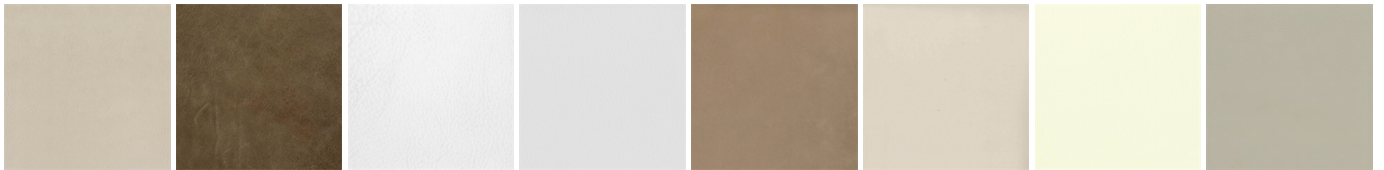
LIPSI - NEW

SKYROS -  
NEW

NAXOS - NEW

# CAMILLA

FINISHINGS\SEAT\LEATHER (8)



NABUK  
LEATHER

VINTAGE  
LEATHER

SUPER  
LEATHER

PELLE  
SPECIAL

AGED-  
LOOKING  
LEATHER

COLORS  
LEATHER

SPRING  
LEATHER

SOFT  
LEATHER