

BIG BUG

PAOLA NAVONE (2009)



DESCRIPTION

Big Bug, the extralarge version of Bug armchair design by Paola Navone. A landscape of comfort in which the seat and arm create highly original geometries.

Poliform

BIG BUG

PAOLA NAVONE (2009)



TECHNICAL DESCRIPTION

TYOLOGY

armchair

STRUCTURE

wood and by-products

PADDING SEAT/BACKREST

multi-density polyurethane foam

PRE-COVER

polyester padding

BASE

feet in plastic

COVER

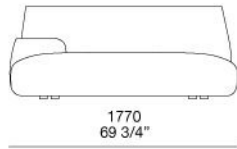
removable in fabric, not removable in leather

Poliform

BIG BUG

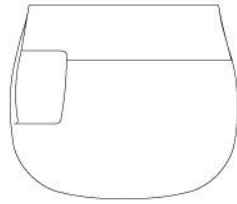
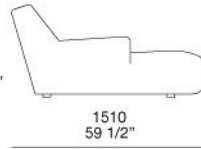
PAOLA NAVONE (2009)

BUPL177S
BUPL177D



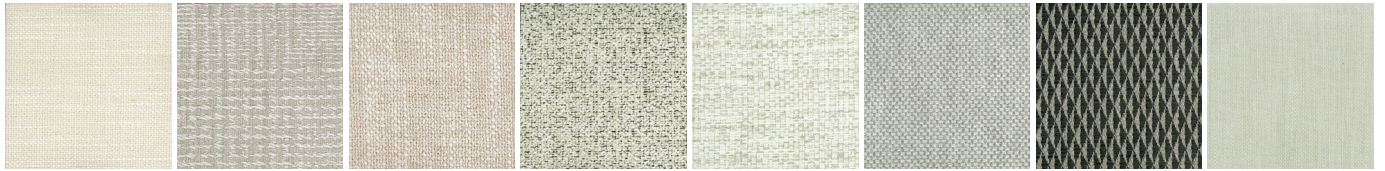
730
28 3/4"

390
15 1/4"



BIG BUG

FINISHINGS\ARMCHAIR\FABRIC (35)



KUSHIRO

SENDAI

NAYORO

KITAMI

CHIOS

ARGO

CORINTO

ITACA



MILOS

OLIMPIA

PAROS

ZANTE

SPARTA

SALFORD

ORLEANS

OXFORD



PERSIA

RABAT

MERIDA

HANNOVER

CORDOBA

CALEDONIA

NORWAY

ASPEN



ATLANTA

BERLINO

KYOTO

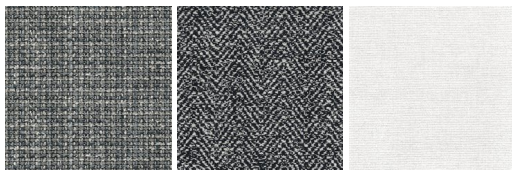
LIMA

MELBOURNE

PORTO

SIVIGLIA

INDRA



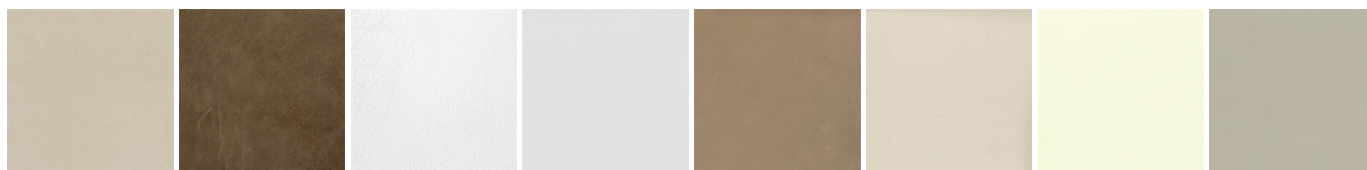
LIPSI

SKYROS

NAXOS

BIG BUG

FINISHINGS\ARMCHAIR\LEATHER (8)



NABUK
LEATHER

VINTAGE
LEATHER

SUPER
LEATHER

PELLE
SPECIAL

AGED-
LOOKING
LEATHER

COLORS
LEATHER

SPRING
LEATHER

SOFT
LEATHER