

MADISON

CARLO COLOMBO (2003)



DESCRIPTION

A wardrobe that makes essence a style. Simplicity is the essence of beauty. Madison is a very simple wardrobe, but his built-in handle emphasises the naturalness of the wood and avoids the superfluous.

Poliform

MADISON

CARLO COLOMBO (2003)



TECHNICAL DESCRIPTION

TPOLOGY

doors Senzafine collection

OPENING

leaf door

DOOR FINISHING

spessart oak (horizontal grain), walnut c. (horizontal grain), oak mat lacquered colours (horizontal grain)

HANDLE

integrated

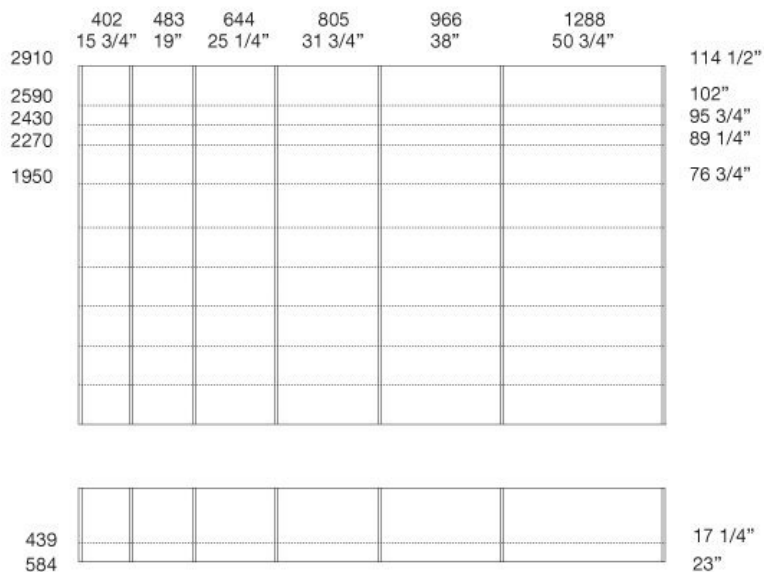
NOTE

no cuts available for mansard wardrobe, Ego door cannot be lent next to it

MADISON

CARLO COLOMBO (2003)

wardrobes

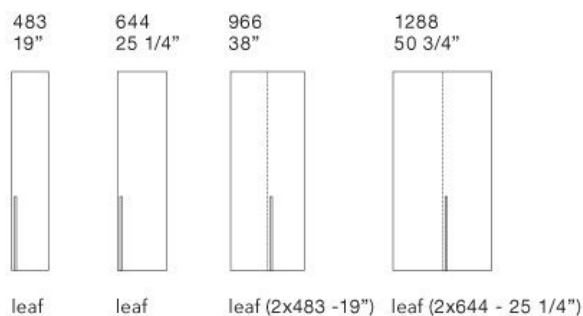


Size calculation with side thickness 25 - 1"

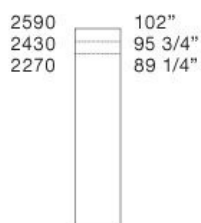
To obtain the total width, add to the sum of the columns mm 25 - 1" for the lateral side.

MADISON *design Carlo Colombo* senzafine doors collection

unit widths



unit heights



Door section



NB

Doors can be reduced in width and height (max width reduction mm 70 - 2 3/4", minimum height mm 2270 - 89 1/4").

Not available for single unit and left single unit.

No cut available for mansard wardrobe.

Ego doors cannot be leant next to it.

Poliform

MADISON

FINISHINGS\STRUCTURE\SENZAFINE MELAMINE (3)



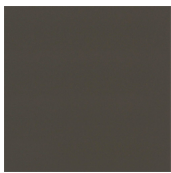
MELAMINE
CENERE OAK

MELAMINE C.
WALNUT

MELAMINE
SPESSART
OAK

MADISON

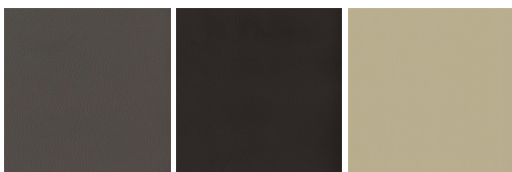
FINISHINGS\EQUIPMENTS\PIOMBO PAINTED METAL (1)



PIOMBO

MADISON

FINISHINGS\EQUIPMENTS\TECNO-LEATHER (3)



01 ELEFANTE

02 MORO

05 LATTE